



**SIZE AND STYLE:** Size as shown below. Style Reverse Tuck (RT), except #175 is Straight Tuck Mailer End (STME), FSB0015U and FSB0016U are Reverse Tuck Arthur Lock (RTAL) and FSB0033U plain envelope is Tuck Top (TT). Optional style cartons (seal end straight tuck, ...) may be ordered with prior FCSD Packaging Engineering approval, but require additional lead time and are not priced on the blanket purchase order.

**JONES MACHINE USAGE:** All cartons are Jones machinable except FSB0002U, FSB0006U, FSB00U7U, FSB0013U, FSB0015U, FSB0016U, and FSB0021U due to their carton depth.

**MATERIAL:** Standard decorative cartons are machine clay-coated 100% recycled newsback (CCNB) multicylinder formed paperboard, 35% minimum post consumer content.

**CALIPER:** Standard decorative cartons are .022" thickness.

**SECURITY:** Cartons require a security feature as specified by FCSD Packaging Engineering.

**PRINTING:** Ford cartons are printed in two colors, Corporate Blue (PMS301) and process black. Motorcraft cartons are printed in two colors, Motorcraft Red (PMS485) and process black, utilizing water soluble vegetable oil based inks. All Ford and Motorcraft cartons should be coated with imprintable aqueous coating. Color chips and artwork available from the FCSD Packaging Engineering Department. Special carton printing or imprinting is available from the carton manufacturer at the request of the carton purchaser. Special application FSB0033U sub-package envelope is plain white, no graphics.


Plain labels have been developed to accommodate part nomenclature and bar code requirements. Refer to the Ford and Motorcraft Labels Material Specification F-MFLSER for label sizes and the chart below. Due to the small size of some cartons, it is acceptable to wrap labels around the end flap and onto the adjoining major panel. Container artwork has been modified for this purpose. Refer to Material Specification PRINT or label or direct imprinting layout and placement. Refer to Material Specification L1569 for bar 39 code sizing. Optional end flap labels have been established as an alternative to the wrap around labels for packagers who choose to apply a separate bar code label. Imprinting the part nomenclature and bar code is an acceptable alternative to labeling.

**APPROVED CARTON MANUFACTURER:** Americraft™ Carton, Inc.

**APPROVED DISTRIBUTOR:** Distributed by Doug Brown Packaging Products  
1850 Larchwood  
Troy, MI 48083  
Sales Contact: Ron Currie (rcurrie@dbpackaging.com)  
Customer Service Contact: Laura Melton (customerservice@dbpackaging.com)

**REVISIONS:**  
9-14-18 (OV) Removed prior material numbers from table. Change FSB0006U shipping container from A1040 to CSN0009.  
12-15-16 (OV) Added prior material numbers on page 2. Obsoleted cartons - MF1, MF136, M291, 291, 310, MF310, 313.

**FORD MOTOR COMPANY, PACKAGING ENGINEERING, FORD CUSTOMER SERVICE DIVISION, 28301 SCHOOLCRAFT RD, BUILDING 300, LIVONIA, MICHIGAN 48150**

Designed  JS	Approved  T.A. Kasper 	Date  8-31-67	Revised  9-14-18
--------------------	--	---------------------	------------------------



CARTON NUMBER		SELECTION SIZE GUIDE (SMALLEST TO LARGEST)	CARTON SIZE - INCHES (L-W-D)	CUBIC VOLUME (INCHES)	STANDARD FCSD MASTERPACK		REQUIRED LABEL	* APPLICATION
FORD CARTON # NEW	MOTORCRAFT CARTON # NEW				SHIPPING QUANTITY	SHIPPING CONTAINER		
FSB0001U	—	13/16" x 2-15/16" x 2-15/16"	2-15/16" x 13/16" x 2-15/16"	7.0	12	A1560	LSJ0002	Wrap Around
FSB0002U	—	1-3/16" x 9-1/2" x 9-1/2"	9-1/2" x 1-3/16" x 9-1/2"	107.1	12	A1120	LSJ0005	Wrap Around
FSB0003U	FSB0003V	1-1/4" x 1-5/8" x 3"	1-5/8" x 1-1/4" x 3"	6.1	20	A2000	LSJ0003	Wrap Around
FSB0004U	—	1-1/4" x 2-1/2" x 2-1/2"	2-1/2" x 1-1/4" x 2-1/2"	7.8	8	A1560	LSJ0002	Wrap Around
FSB0005U	FSB0005V	1-1/4" x 3" x 3-1/4"	3-1/4" x 1-1/4" x 3"	12.1	20	A2040	LSJ0002	Wrap Around
FSB0006U	—	1-5/16" x 3-3/8" x 12-7/16"	3-3/8" x 1-5/16" x 12-7/16"	55.0	12	CSN0009	LSJ0004	Wrap Around
FSB0007U	—	1-3/8" x 3-7/16" x 9-1/8"	3-7/16" x 1-3/8" x 9-1/8"	43.1	6	A1380	LSJ0004	Wrap Around
FSB0008U	—	1-1/2" x 1-3/4" x 6"	1-3/4" x 1-1/2" x 6"	15.7	10	A1370	LSJ0006	Wrap Around
FSB0009U	—	1-1/2" x 3-3/4" x 3-3/4"	3-3/4" x 1-1/2" x 3-3/4"	21.0	12	A1380	LSJ0004	Wrap Around
FSB0010U	—	1-1/2" x 4-1/4" x 6-1/2"	4-1/4" x 1-1/2" x 6-1/2"	41.4	8	A1400	LSJ0004	Wrap Around
FSB0011U	FSB0011V	1-1/2" x 4-1/2" x 4-1/2"	4-1/2" x 1-1/2" x 4-1/2"	30.3	8	A1270	LSJ0004	Wrap Around
FSB0012U	—	1-1/2" x 5" x 5"	5" x 1-1/2" x 5"	37.5	10	A1400	LSJ0004	Wrap Around
FSB0014U	FSB0014V	1-5/8" x 2-1/2" x 3"	2-1/2" x 1-5/8" x 3"	12.1	20	A2040	LSJ0004	Wrap Around
FSB0015U	—	1-3/4" x 1-3/4" x 9-7/8"	1-3/4" x 1-3/4" x 9-7/8"	30.2	8	A1380	LSJ0006	Wrap Around
FSB0016U	—	1-3/4" x 1-3/4" x 13-1/4"	1-3/4" x 1-3/4" x 13-1/4"	40.5	12	A1030	LSJ0006	Wrap Around
FSB0017U	—	1-3/4" x 2-3/4" x 4-1/4"	2-3/4" x 1-3/4" x 4-1/4"	20.4	8	A1370	LSJ0005	Wrap Around
FSB0018U	FSB0018V	2-1/4" x 2-1/4" x 3-3/4"	2-1/4" x 2-1/4" x 3-3/4"	18.9	8	A1370	LSJ0005	Wrap Around
FSB0019U	—	2-1/4" x 3-5/8" x 4-1/4"	3-5/8" x 2-1/4" x 4-1/4"	34.6	6	A1370	LSJ0001	End Flap
FSB0020U	—	2-1/4" x 3-3/4" x 5-1/2"	3-3/4" x 2-1/4" x 5-1/2"	46.4	6	A1380	LSJ0001	End Flap
—	FSB0021V	2-1/2" x 4-1/2" x 12"	4-1/2" x 2-1/2" x 12"	135.0	8	A1080	LSJ0002	End Flap
FSB0022U	FSB0022V	2-3/8" x 2-3/8" x 6"	2-3/8" x 2-3/8" x 6"	33.8	8	A1390	LSJ0005	Wrap Around
FSB0023U	FSB0023V	2-1/2" x 3" x 3-1/4"	3-1/4" x 2-1/2" x 3"	24.3	20	A2030	LSJ0001	End Flap
FSB0024U	FSB0024V	2-1/2" x 7-1/4" x 7-1/4"	7-1/4" x 2-1/2" x 7-1/4"	131.4	8	A1100	LSJ0002	End Flap
FSB0025U	FSB0025V	2-5/8" x 2-5/8" x 8-1/2"	2-5/8" x 2-5/8" x 8-1/2"	58.5	8	A1020	LSJ0005	Wrap Around
—	FSB0026V	3" x 4-1/2" x 5-3/4"	4-1/2" x 3" x 5-3/4"	77.6	10	A1430	LSJ0004	End Flap
FSB0027U	FSB0027V	3-1/4" x 3-1/4" x 5-1/4"	3-1/4" x 3-1/4" x 5-1/4"	55.4	8	A1400	LSJ0001	End Flap
FSB0028U	FSB0028V	3-1/4" x 4" x 4"	4" x 3-1/4" x 4"	52.0	10	A1410	LSJ0002	End Flap
FSB0029U	—	3-3/8" x 3-3/8" x 6-9/16"	3-3/8" x 3-3/8" x 6-9/16"	74.7	12	A1050	LSJ0001	End Flap

FORD MOTOR COMPANY, PACKAGING ENGINEERING, FORD CUSTOMER SERVICE DIVISION, 28301 SCHOOLCRAFT RD, BUILDING 300, LIVONIA, MICHIGAN 48150

Designed  JS	Approved  T.A. Kasper	Date  8-31-67	Revised  9-14-18
--------------------	-----------------------------	---------------------	------------------------




CARTON NUMBER		SELECTION SIZE GUIDE (SMALLEST TO LARGEST)	CARTON SIZE - INCHES (L-W-D)	CUBIC VOLUME (INCHES)	STANDARD FCSD MASTERPACK		REQUIRED LABEL	* APPLICATION
FORD CARTON # NEW	MOTORCRAFT CARTON # NEW				SHIPPING QUANTITY	SHIPPING CONTAINER		
—	FSB0030V	3-3/8" x 5" x 5"	5" x 3-3/8" x 5"	84.3	8	A1030	LSJ0004	End Flap
FSB0031U	FSB0031V	4-3/8" x 4-3/8" x 5-1/4"	4-3/8" x 4-3/8" x 5-1/4"	100.4	12	MC130910	LSJ0004	End Flap

SPECIAL APPLICATION FORD FOLDING CARTONS					
FORD CARTON # NEW	CARTON SIZE - INCHES (L-W-D)	STYLE	BLANKET ORDER	APPLICATION	SPECIAL NOTE
FSB0033U (Folder)	4" x — x 3"	(TT)	Yes	Gasket and Misc. Thin Parts	Plain White Gasket Sub-Pkg
FSB0034U	1-7/8" x 5/8" x 4-1/4"	ST	Yes	Light Bulb	Insert A *
FSB0035U	2-1/8" x 1-1/4" x 7-3/8"	ST	Yes	Light Bulb	Inserts A*, B, C, D & E
FSB0036U	3-1/8" x 1-1/4" x 7-1/4"	ST	Yes	Light Bulb	Inserts A*, B & C
FSB0037U	2-3/4" x 1-3/4" x 4-1/4"	RT	No	Light Bulb	Insert Attached - Special application of #169 carton

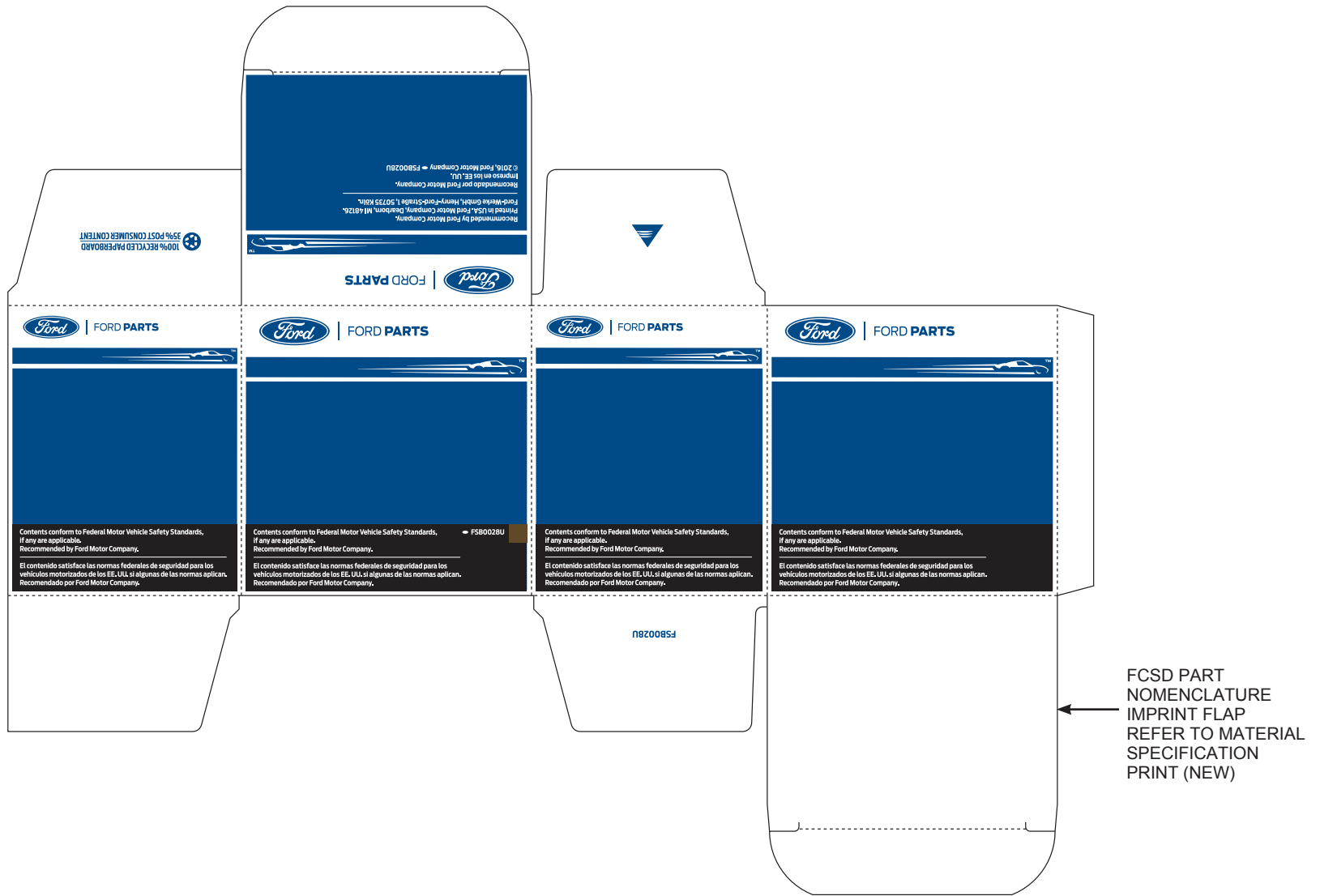
OBSOLETE FORD/MOTORCRAFT FOLDING CARTONS					
FORD NEW	MOTORCRAFT NEW	CARTON SIZE - INCHES (L-W-D)	STYLE	CALIPER	PHASE OUT INITIATION DATE
—	FSB0007V	3-7/16" x 1-3/8" x 9-1/8"	RT	.022"	4th Quarter 2016
FSB0013U	FSB0013V	7-1/8" x 1-1/2" x 10-1/8"	RT	.022"	4th Quarter 2016
FSB0021U	—	4-1/4" x 2-1/2" x 12"	RT	.022"	4th Quarter 2016
—	FSB0029V	3-3/8" x 3-3/8" x 6-9/16"	RT	.022"	4th Quarter 2016
FSB0032U	FSB0032V	4-5/8" x 4-5/8" x 8-1/4"	RT	.022"	4th Quarter 2016

FORD MOTOR COMPANY, PACKAGING ENGINEERING, FORD CUSTOMER SERVICE DIVISION, 28301 SCHOOLCRAFT RD, BUILDING 300, LIVONIA, MICHIGAN 48150

Designed  JS	Approved  T.A. Kasper 	Date  8-31-67	Revised  9-14-18
--------------------	--	---------------------	------------------------



### FORD TYPICAL LAYOUT EXAMPLE

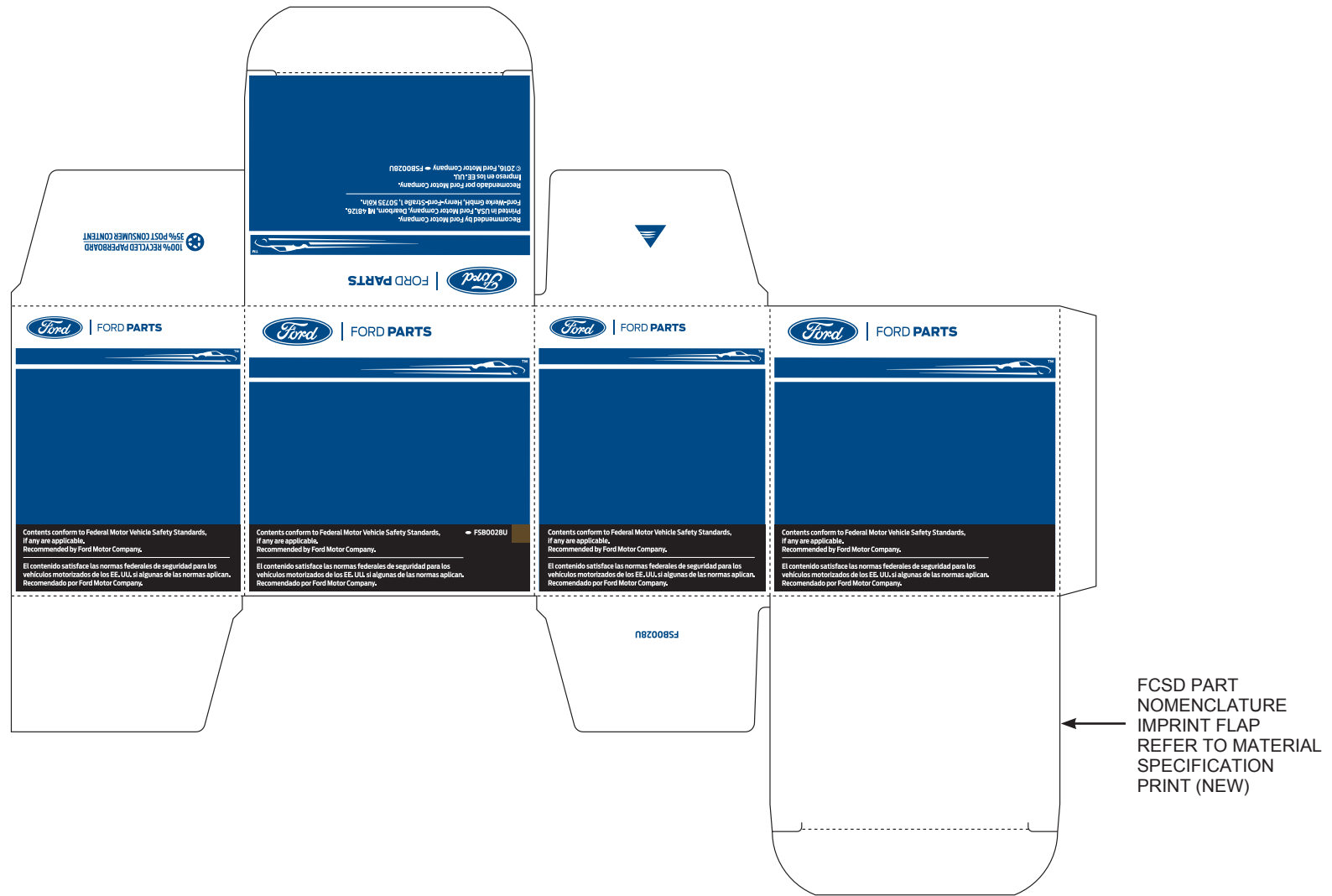


FORD MOTOR COMPANY, PACKAGING ENGINEERING, FORD CUSTOMER SERVICE DIVISION, 28301 SCHOOLCRAFT RD, BUILDING 300, LIVONIA, MICHIGAN 48150

Designed JS	Approved T.A. Kasper	Date 8-31-67	Revised 9-14-18
----------------	-------------------------	-----------------	--------------------



### FORD TYPICAL LAYOUT EXAMPLE WHITE-OUT PANEL

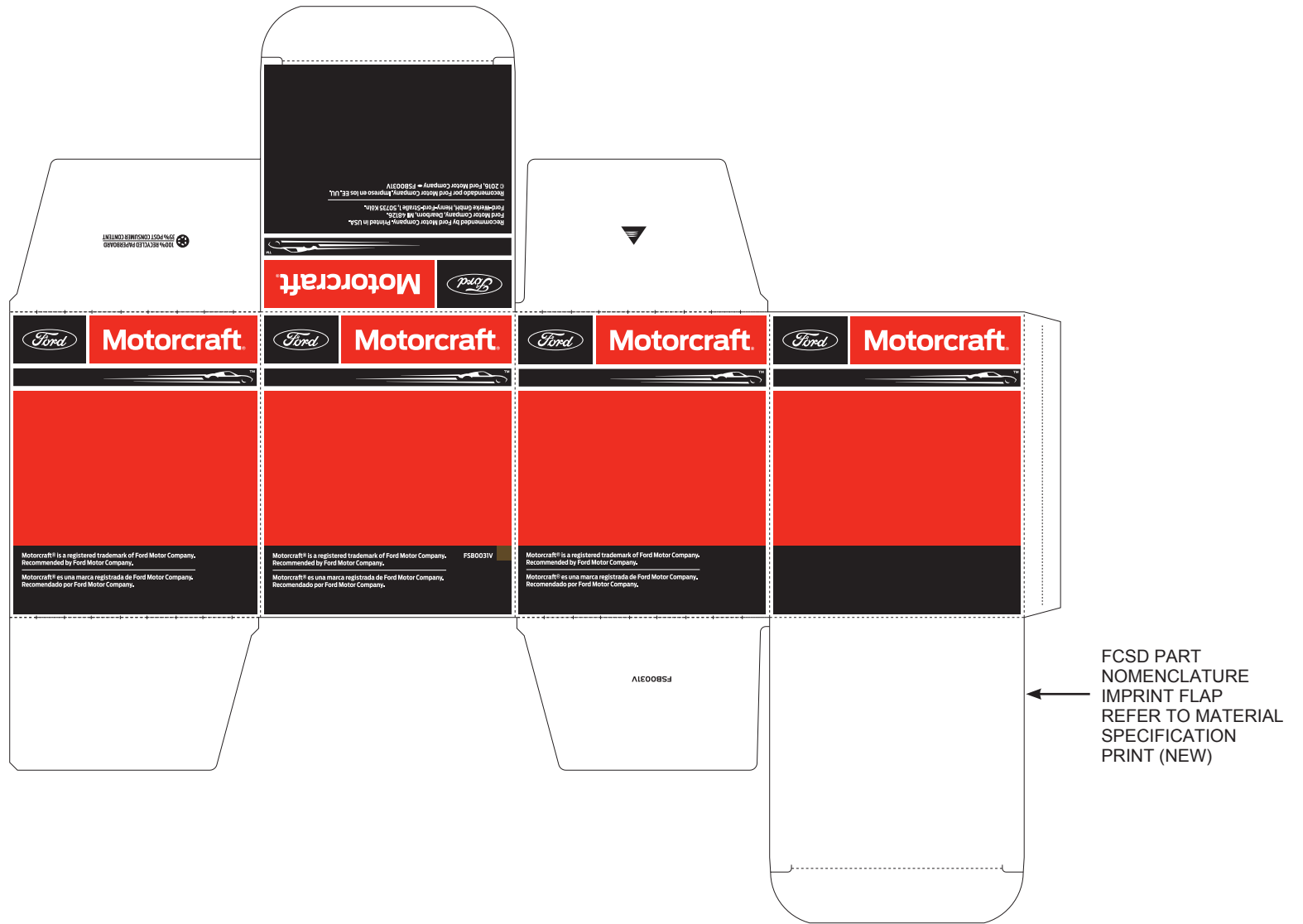


FORD MOTOR COMPANY, PACKAGING ENGINEERING, FORD CUSTOMER SERVICE DIVISION, 28301 SCHOOLCRAFT RD, BUILDING 300, LIVONIA, MICHIGAN 48150

Designed	JS	Approved	T.A. Kasper <i>[Signature]</i>	Date	8-31-67	Revised	9-14-18
----------	----	----------	--------------------------------	------	---------	---------	---------



### MOTORCRAFT TYPICAL LAYOUT EXAMPLE

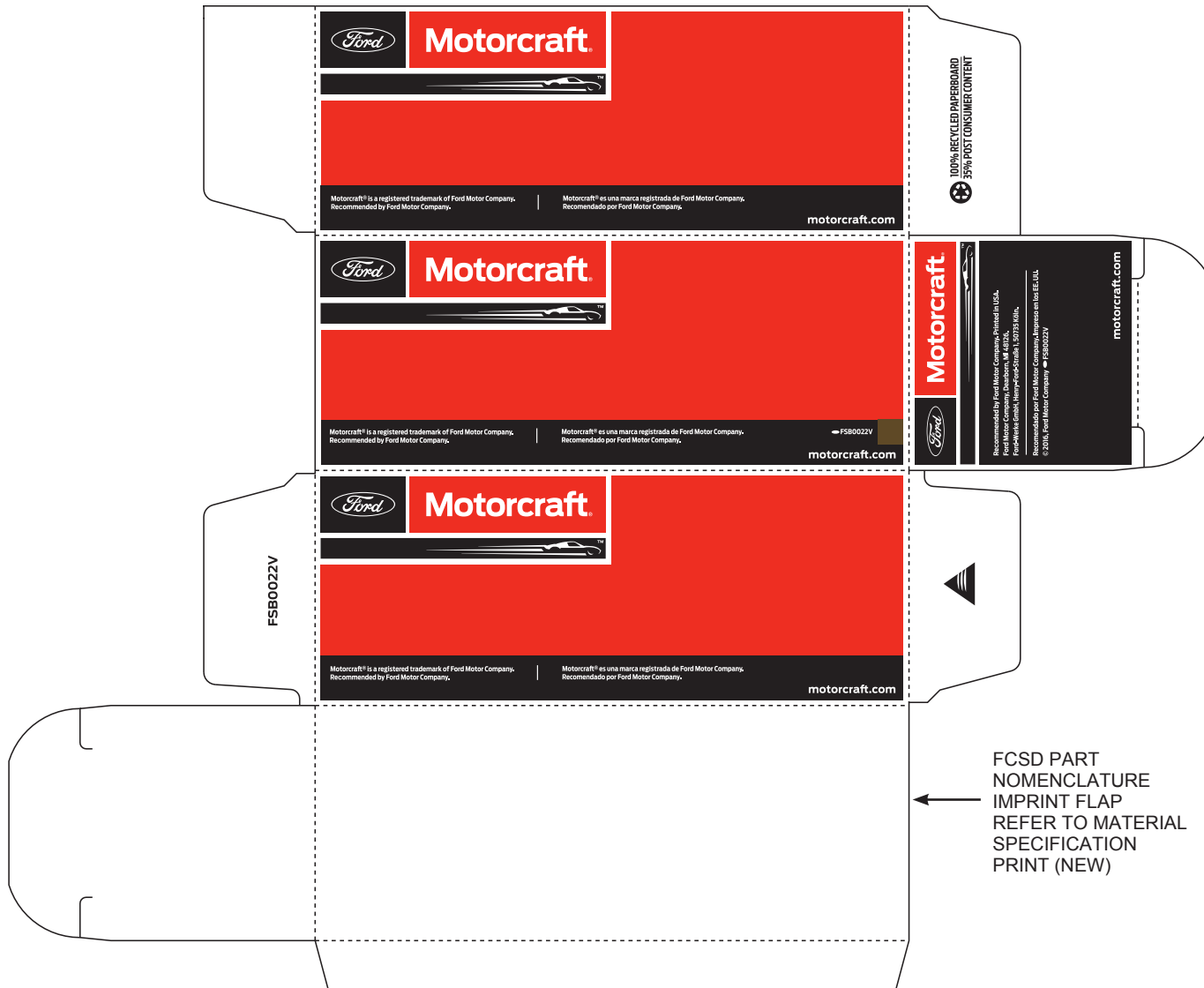


FORD MOTOR COMPANY, PACKAGING ENGINEERING, FORD CUSTOMER SERVICE DIVISION, 28301 SCHOOLCRAFT RD, BUILDING 300, LIVONIA, MICHIGAN 48150

Designed JS	Approved T.A. Kasper <i>T.A. Kasper</i>	Date 8-31-67	Revised 9-14-18
----------------	--	-----------------	--------------------



### MOTORCRAFT TYPICAL LAYOUT EXAMPLE WHITE-OUT PANEL



FORD MOTOR COMPANY, PACKAGING ENGINEERING, FORD CUSTOMER SERVICE DIVISION, 28301 SCHOOLCRAFT RD, BUILDING 300, LIVONIA, MICHIGAN 48150

Designed JS	Approved T.A. Kasper <i>T.A. Kasper</i>	Date 8-31-67	Revised 9-14-18
----------------	--	-----------------	--------------------